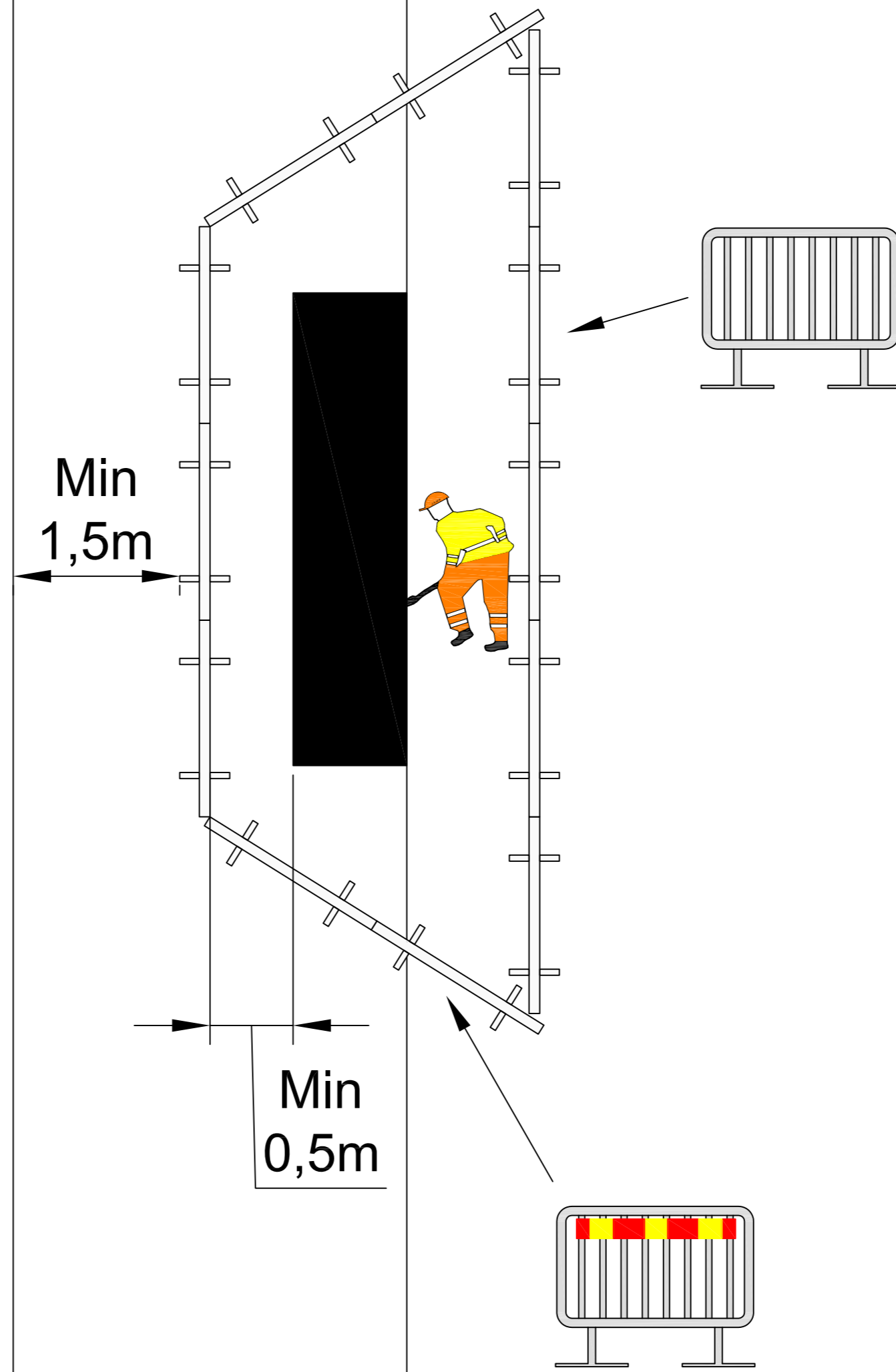


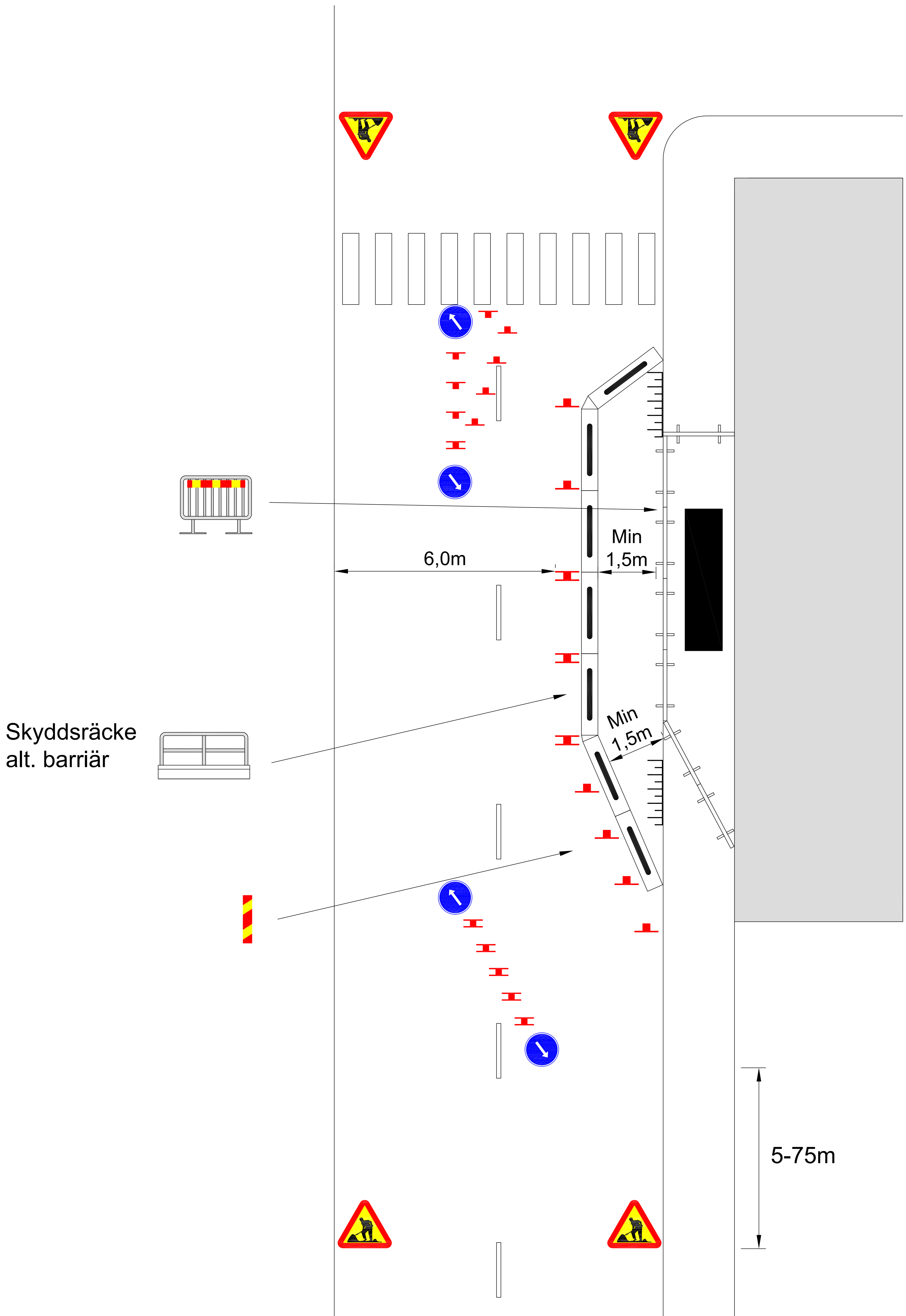
1. Arbete på gång- och cykelväg



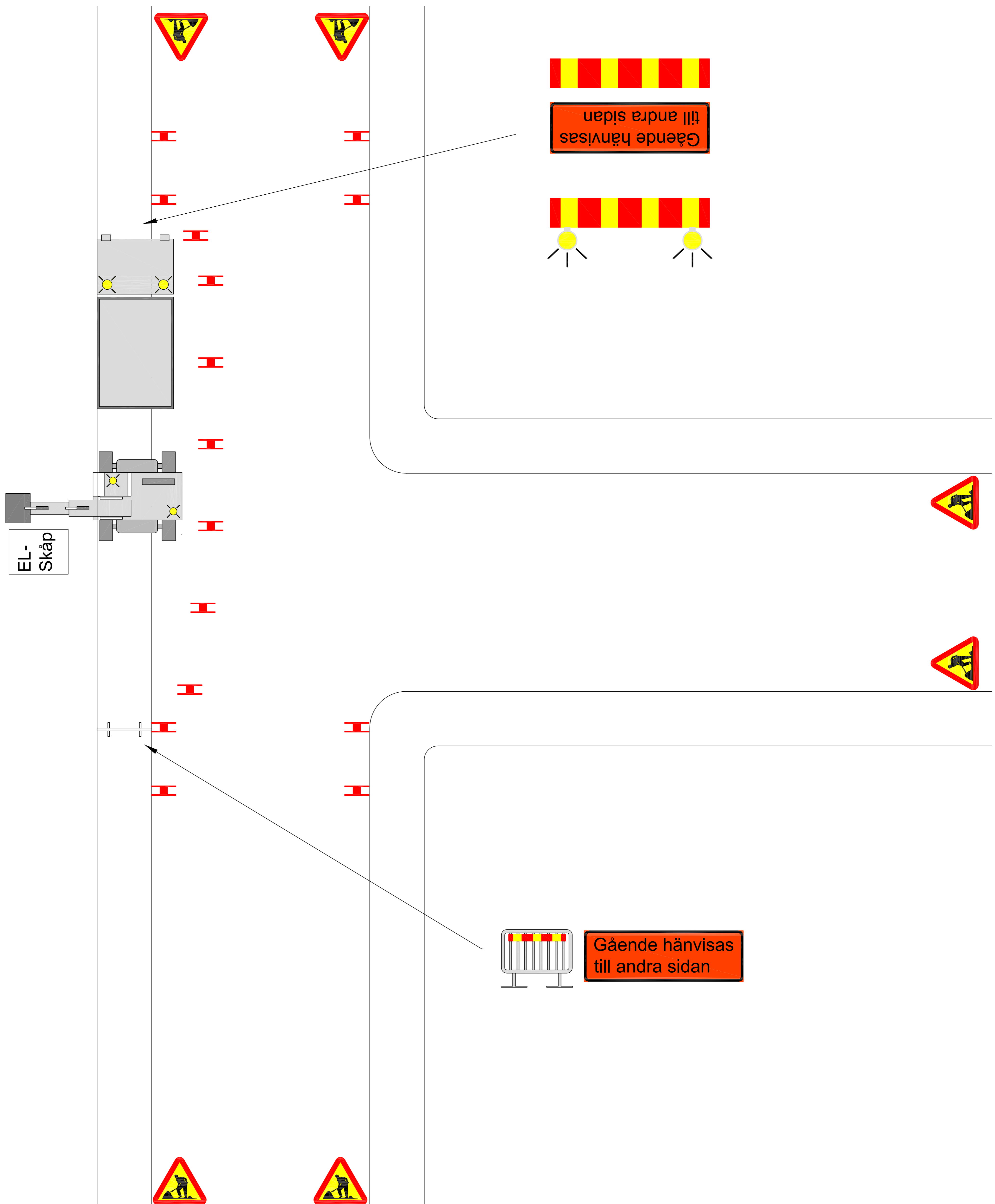
GC-Väg



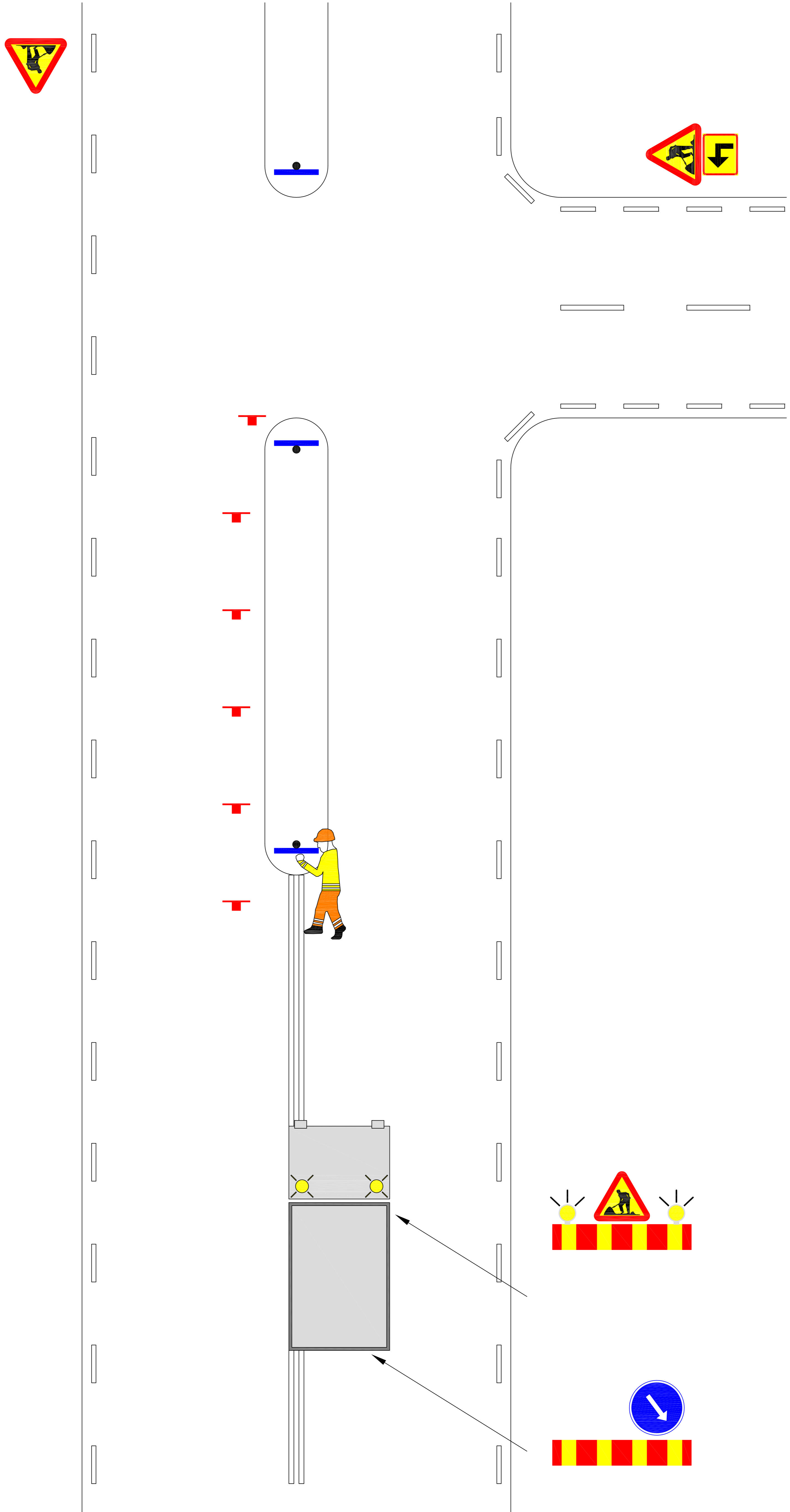
2. Arbete på gång- och /eller cykelbana



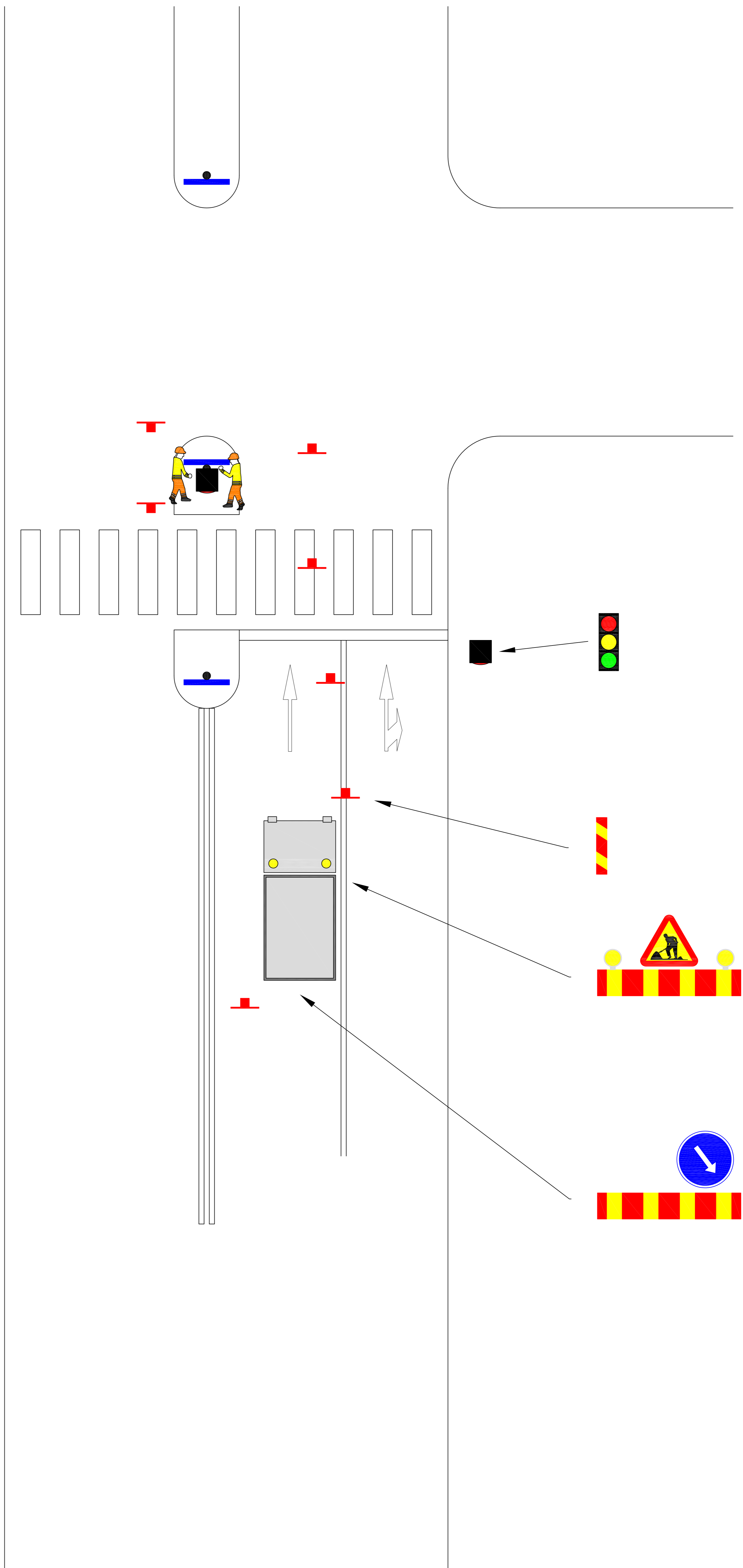
3. Arbete på gångbana- lågtrafikerad gata



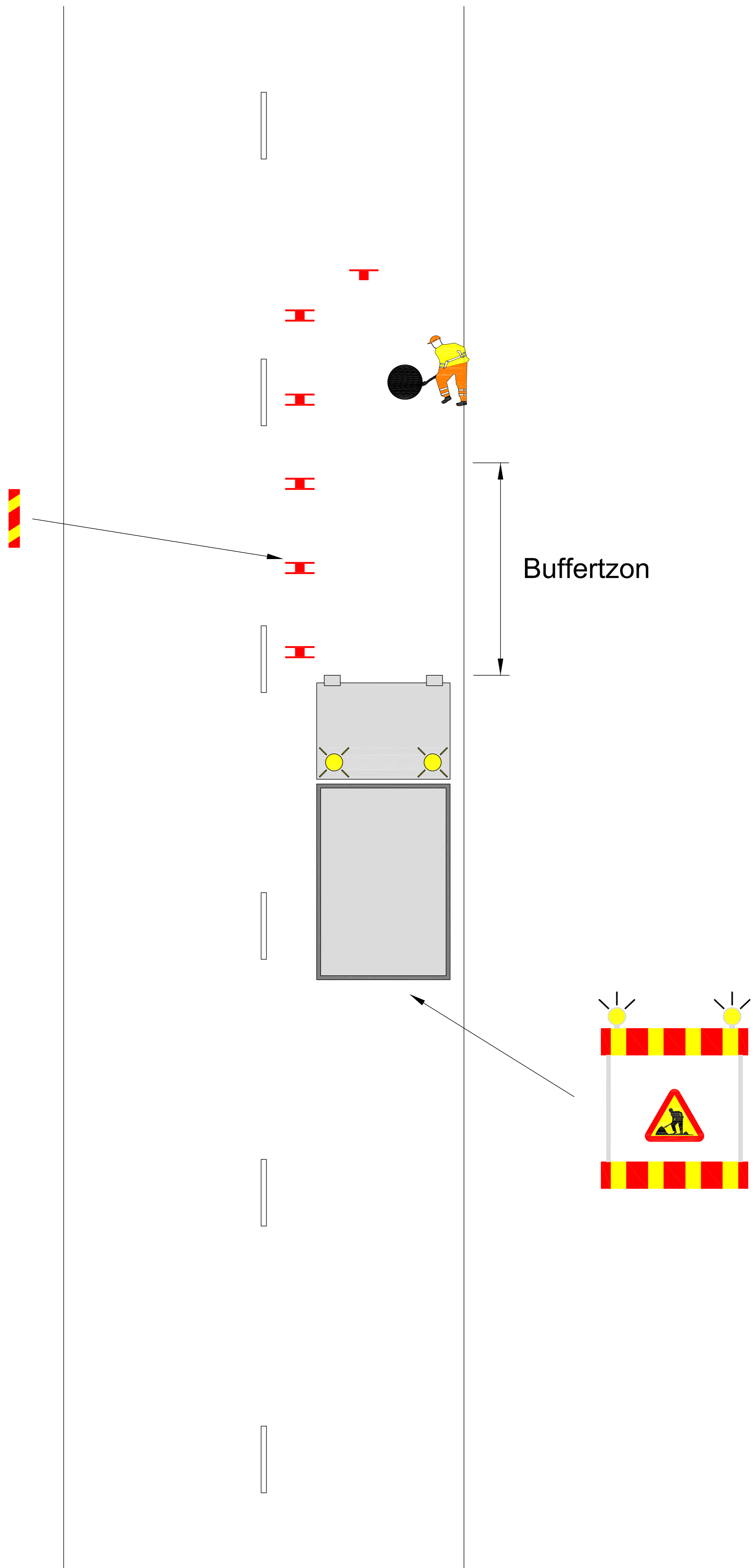
4. Arbete i refug

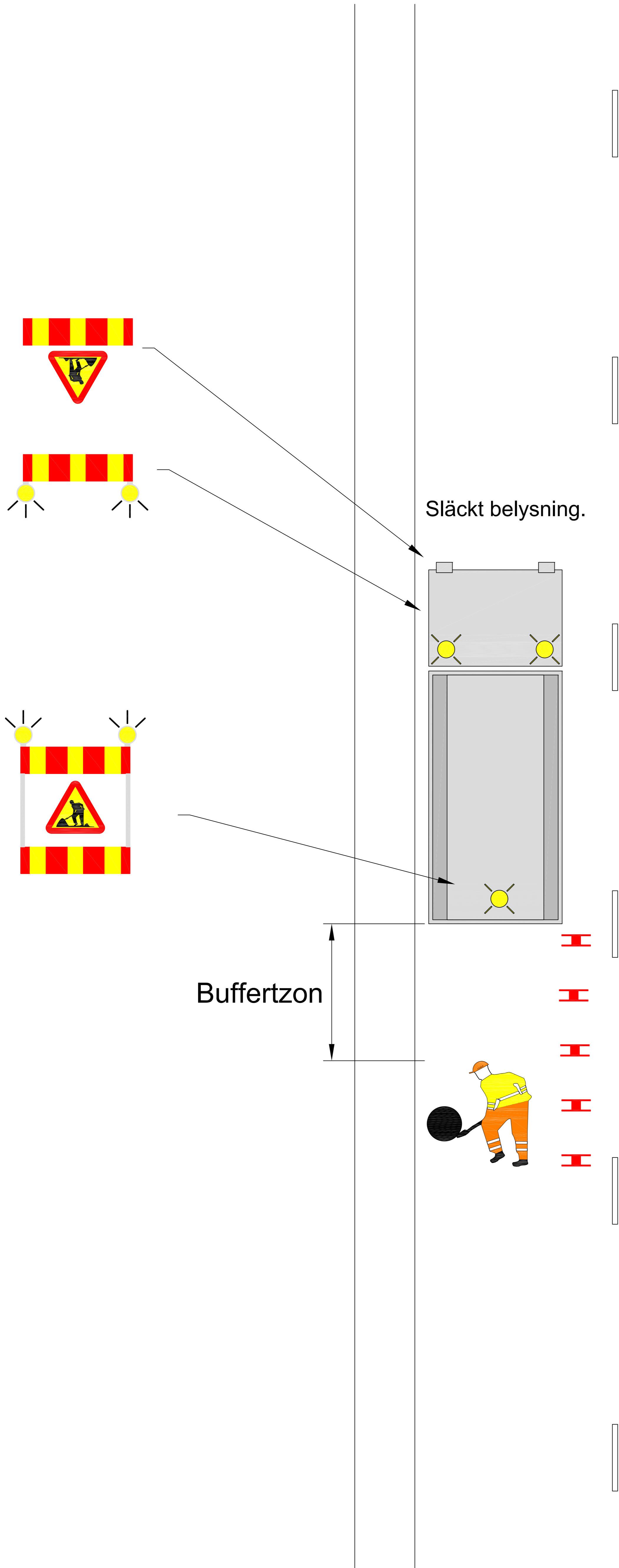


5. Arbete i refug - flerfältiggata

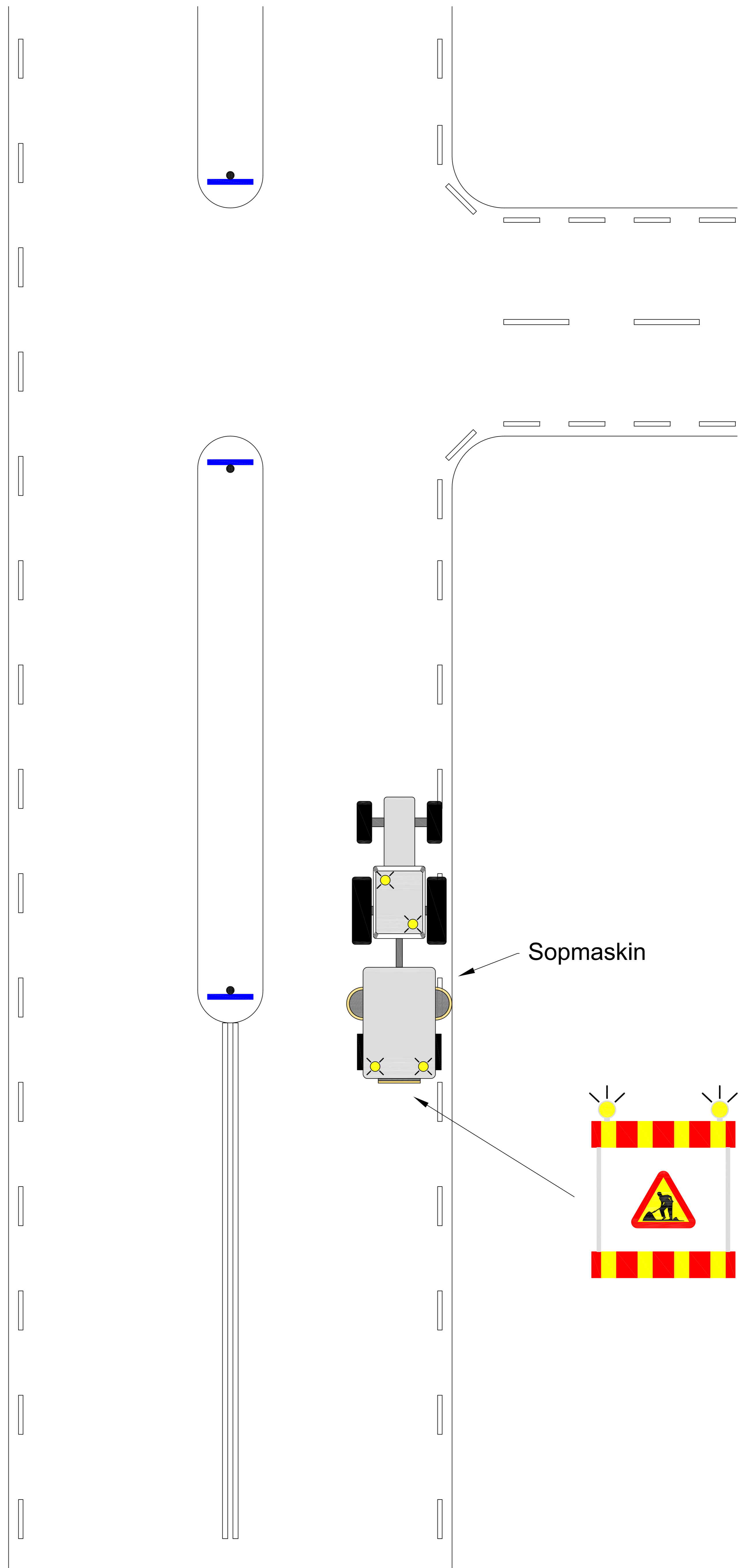


6. Arbete på gatans ena sida

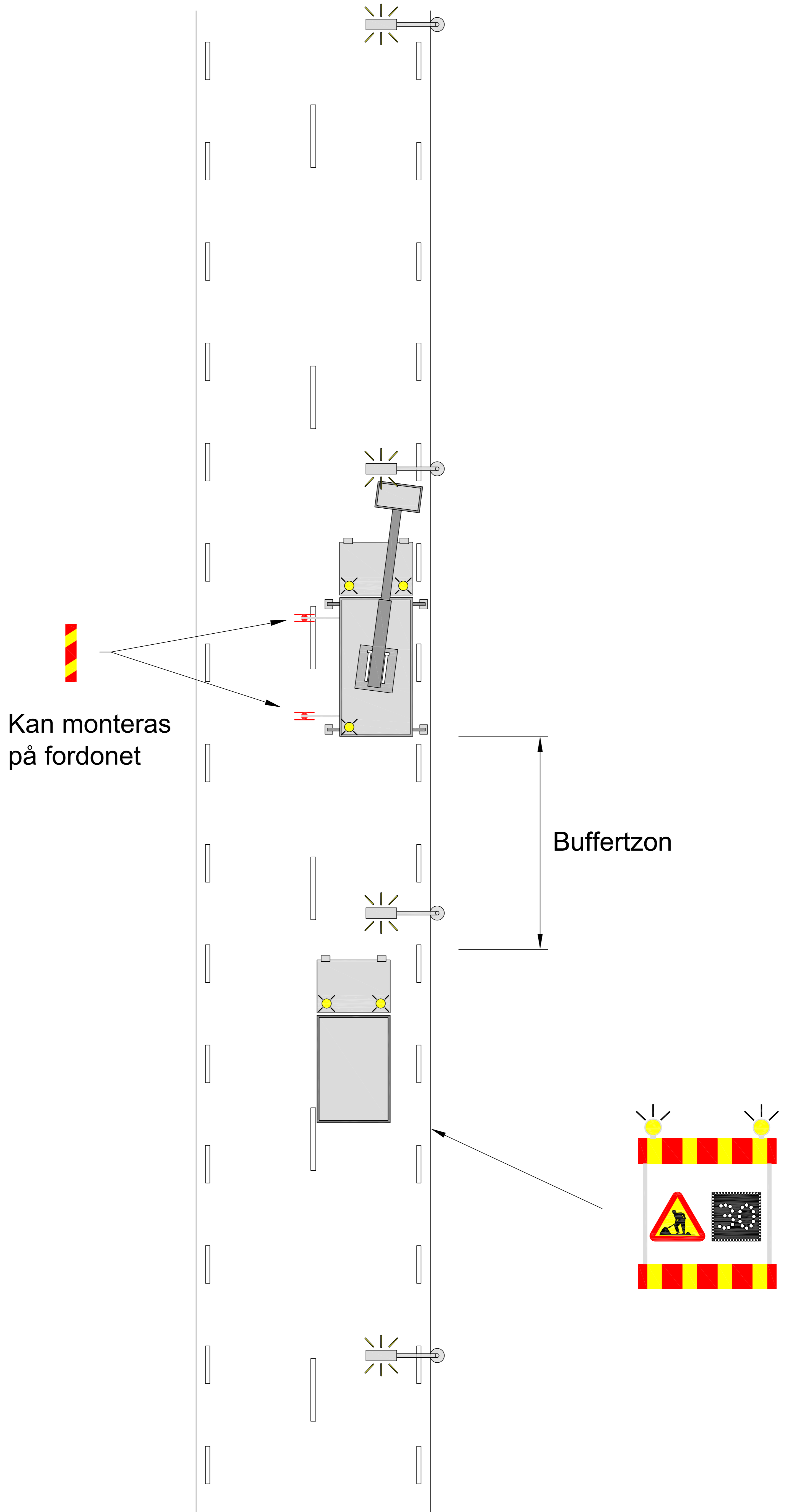




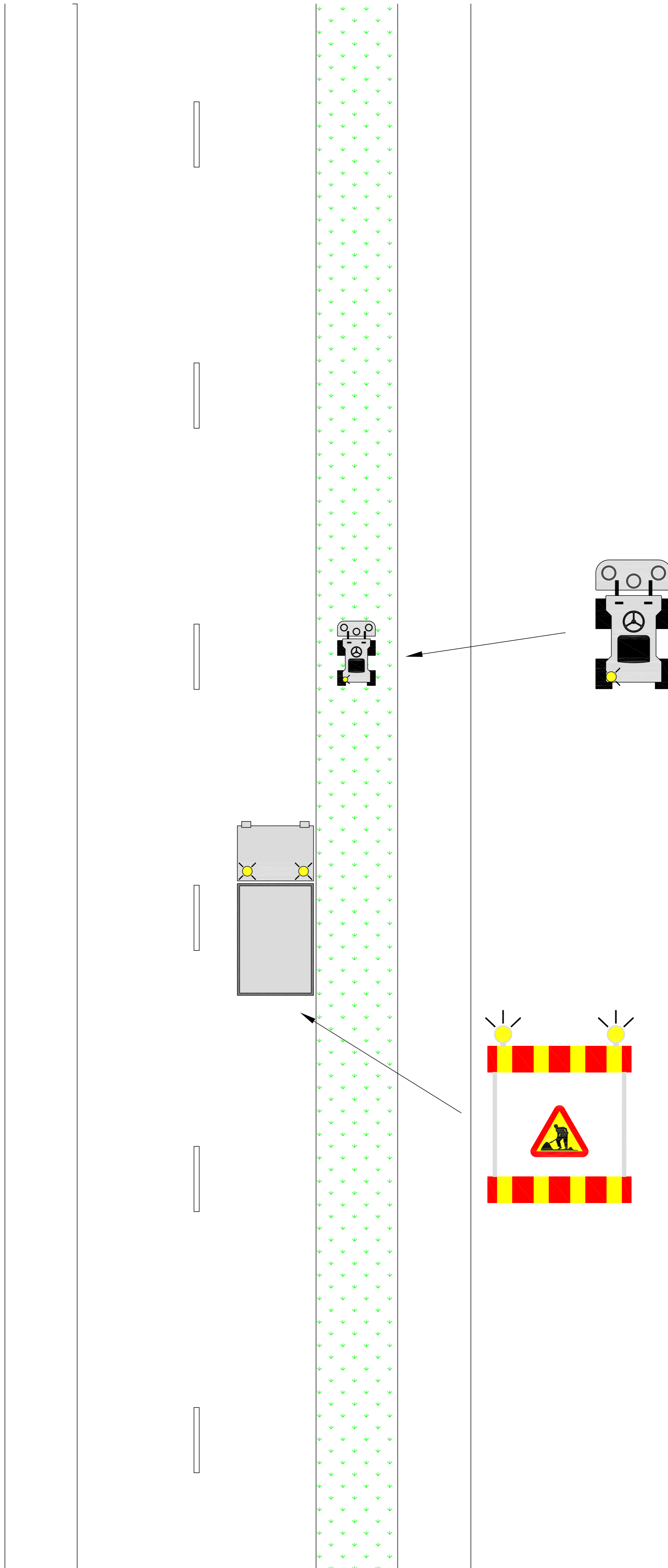
8. Arbete med sopning



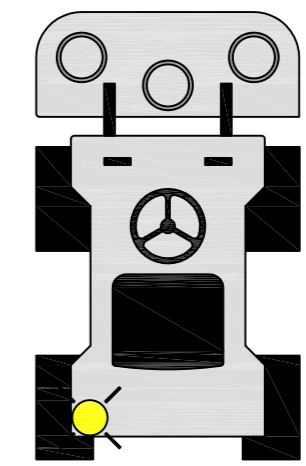
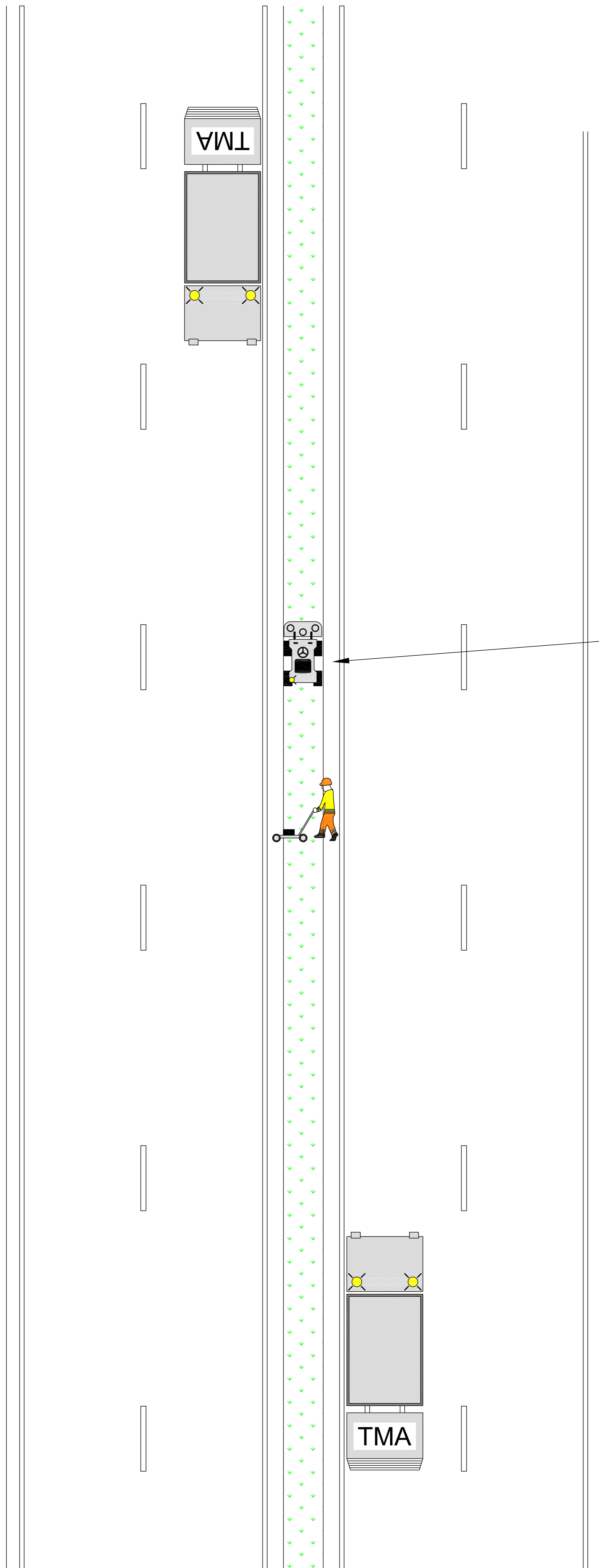
9. Arbete med lift



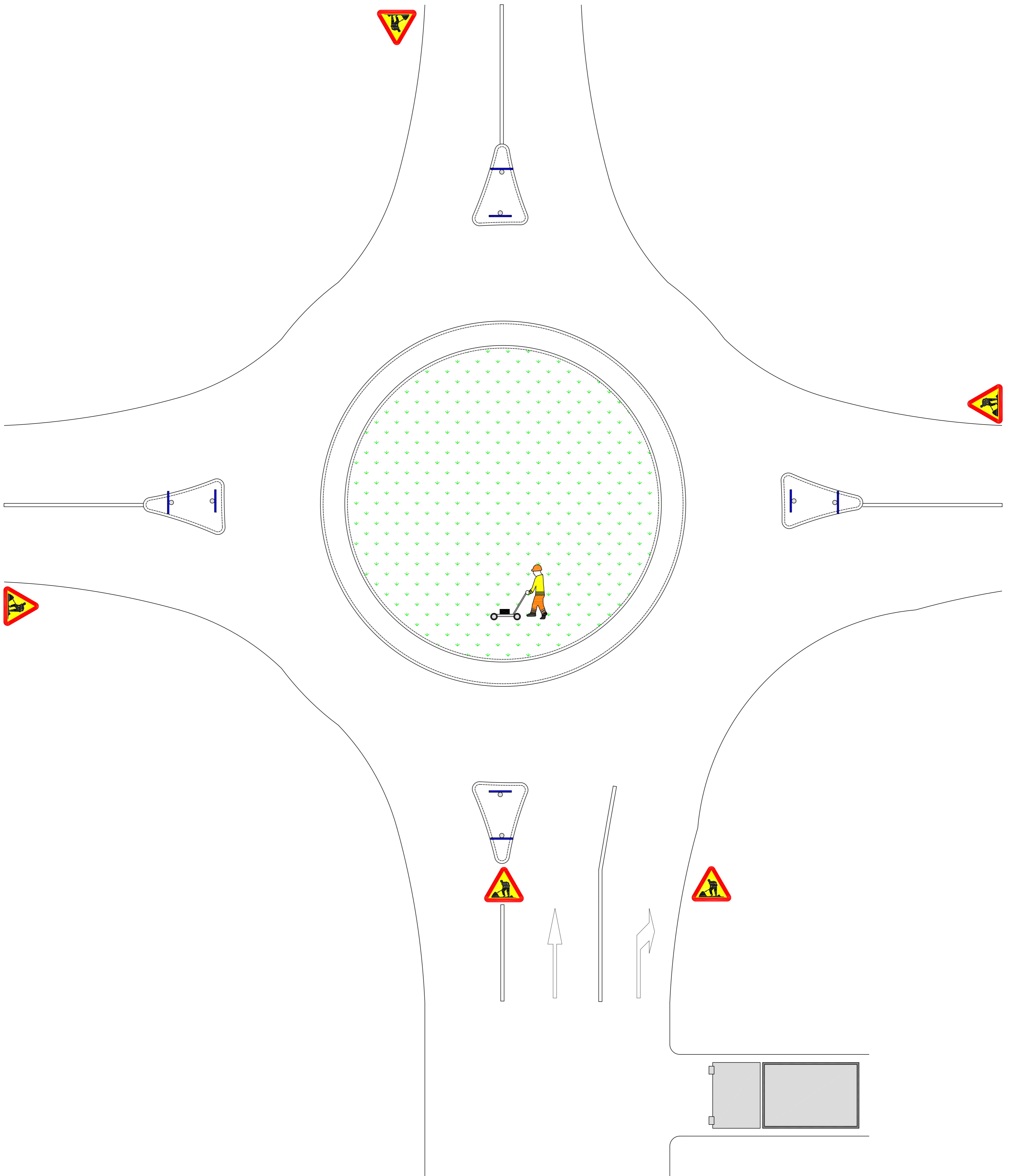
10. Arbete intilliggande gata - i skiljeremsa



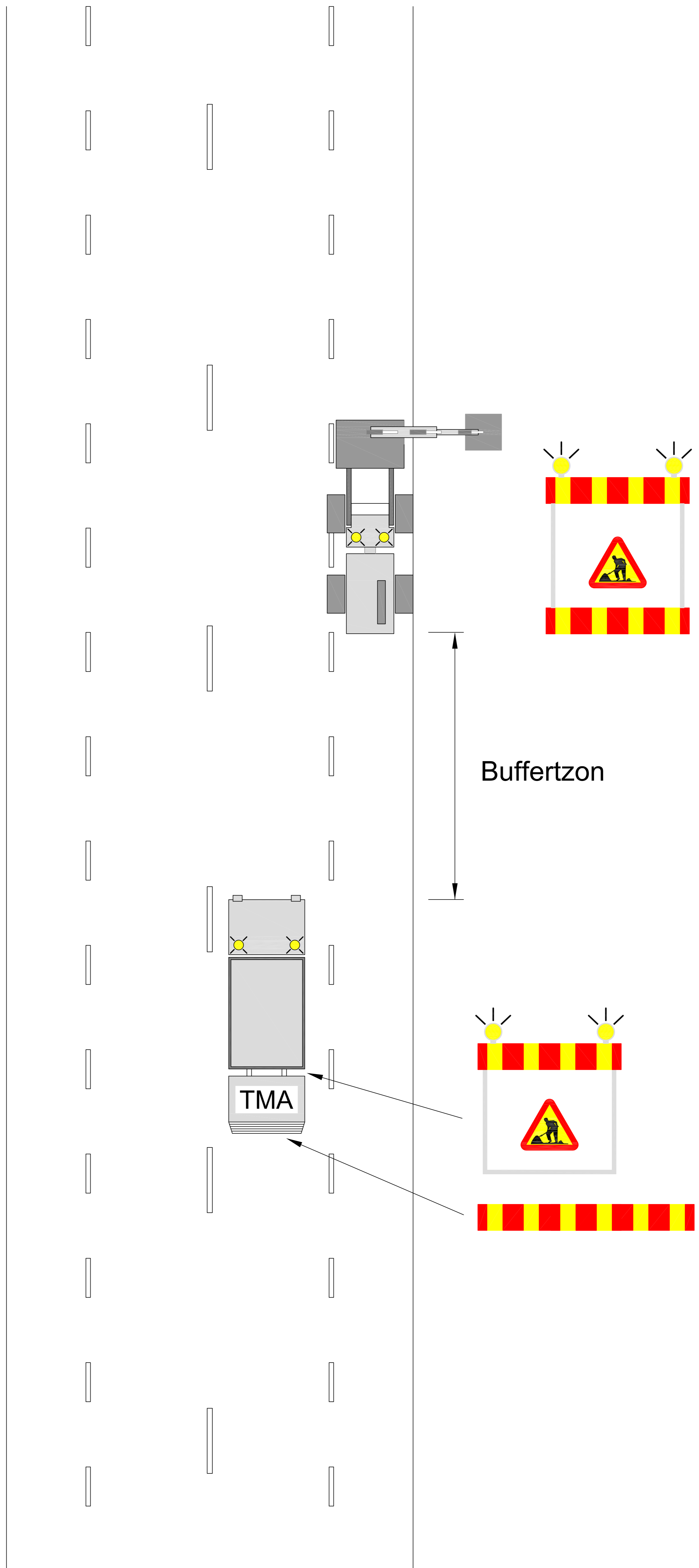
11. Arbete i mittremsa - trafikintensiv gata

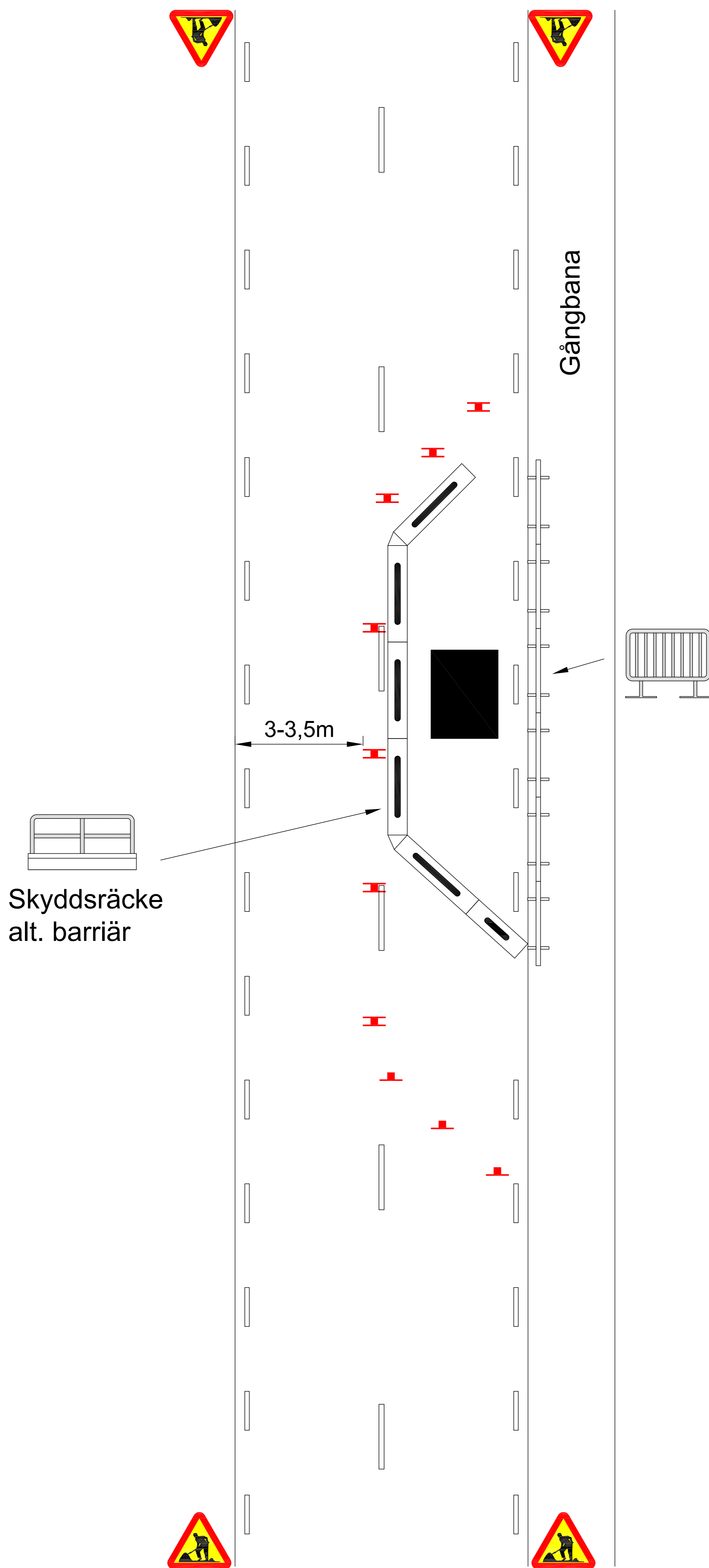


12. Arbete i rondellen i en cirkulationsplats



13. Arbete på vägrenen - trafikintensiv gata





15. Större arbete på flerfältig gata

